

MONITORING DEVICE

EVB202

Communication gateway for Envertech microinverters.



COST- EFFECTIVE

Lowest price compared to any similar competitor product.



SMART

Online smart monitoring and management of Envertech PV system.



PLCC

Power line carrier communication ensures stability and reliability.



PLUG & PLAY

Fast installation.

Model

EVB202

Interface

Communication Method	PLCC (Power Line Carrier Communication)
Display	LCD Screen
Ethernet	RJ45

Capacity

Number of Devices Connected	Up to 40 Units of PV Modules in a Single Phase System
-----------------------------	---

Power Requirements

AC Supply	220V/230V/240V; 50Hz/60Hz
Power Consumption	<3W

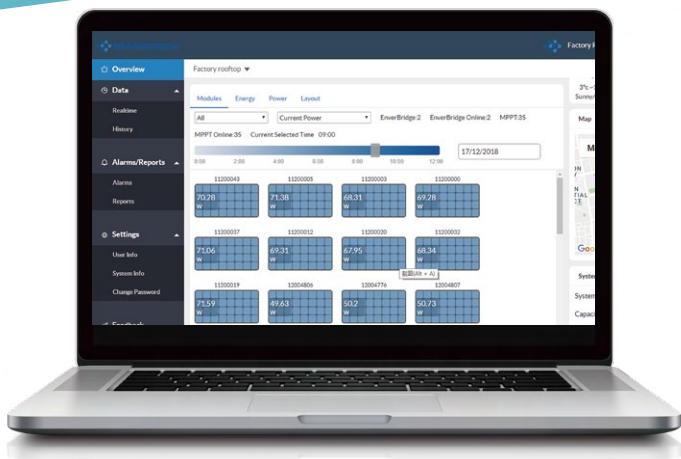
Mechanical Data

Dimensions (W*H*D)	225mm*50mm*107mm
Weight	740g
Cooling	Natural Convection- No Fans
Ambient Temperature Range	-40 C to +65 C
Ingress Protection (IP)	IP 65

Features

Compliance	CE
Warranty	5 Years

SMART MONITORING SYSTEM



EnverPortal



Comprehensive data display and analysis for the whole system and each panel.



Both realtime and daily, monthly, yearly data available.



Problem detection at module level for easy maintenance.



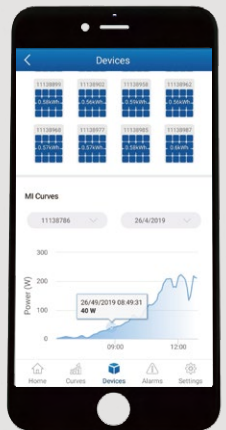
EnverView

GET IT ON
Google Play

Download on the
App Store



A fast convenient monitoring and management of your system's performance right in your palm.



ENVERTECH

www.envertec.com